



INDUSTRY

Automotive

SPECIFIC AREA

Tire shaping and Curing (Goodyear)

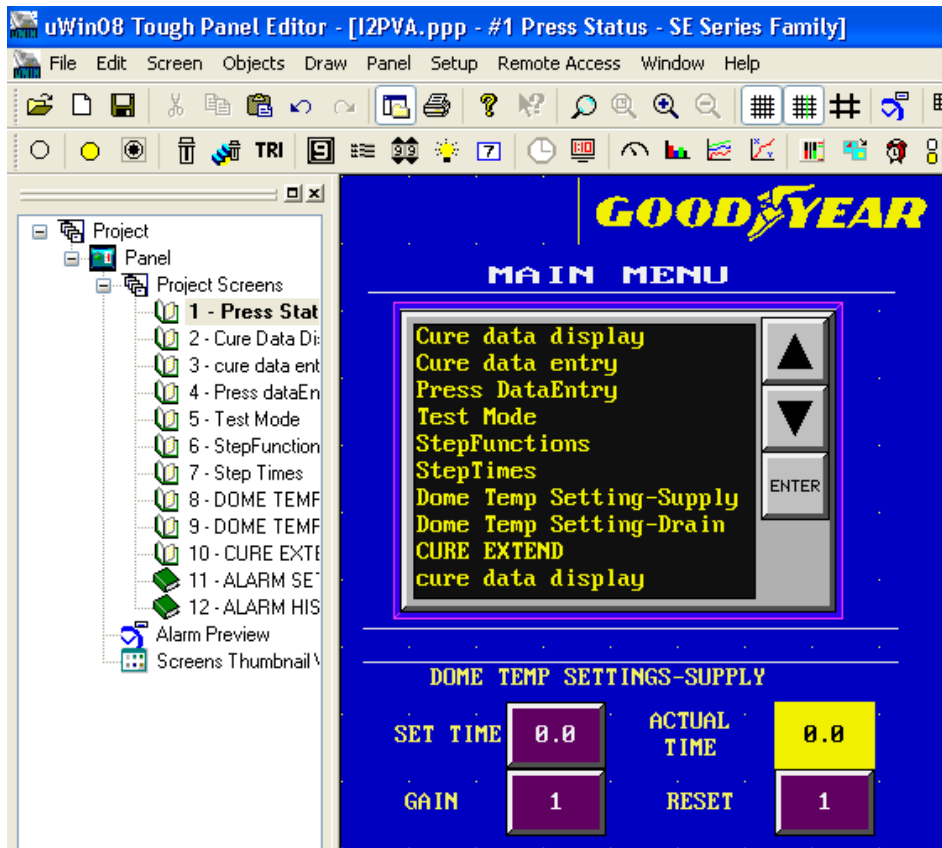
PRODUCT USED

8" Uticor SE Tough Panel with SLC-500 PLC
(DH-485 serial protocol)



APPLICATION

This application involves a PLC controlled Hydraulic Tire Shaping Curing Machine. The machine encompasses a mould opening/closing and adjusting device. Also contains a center mechanism, curing chamber, tire loading/unloading device, hydraulic system, post cure inflator and a pipeline system etc. The machine is mainly used to vulcanize radial tires and increase their resilience. All the functions such as tire loading, shaping, and unloading are achieved by it. Goodyear uses Uticor panels to display the curing state and control the Temperature settings. A sample of the Touchscreen design is shown here. The panel was used to replace push button controls.



WHY UTICOR

- Durable
- Corrosion resistant