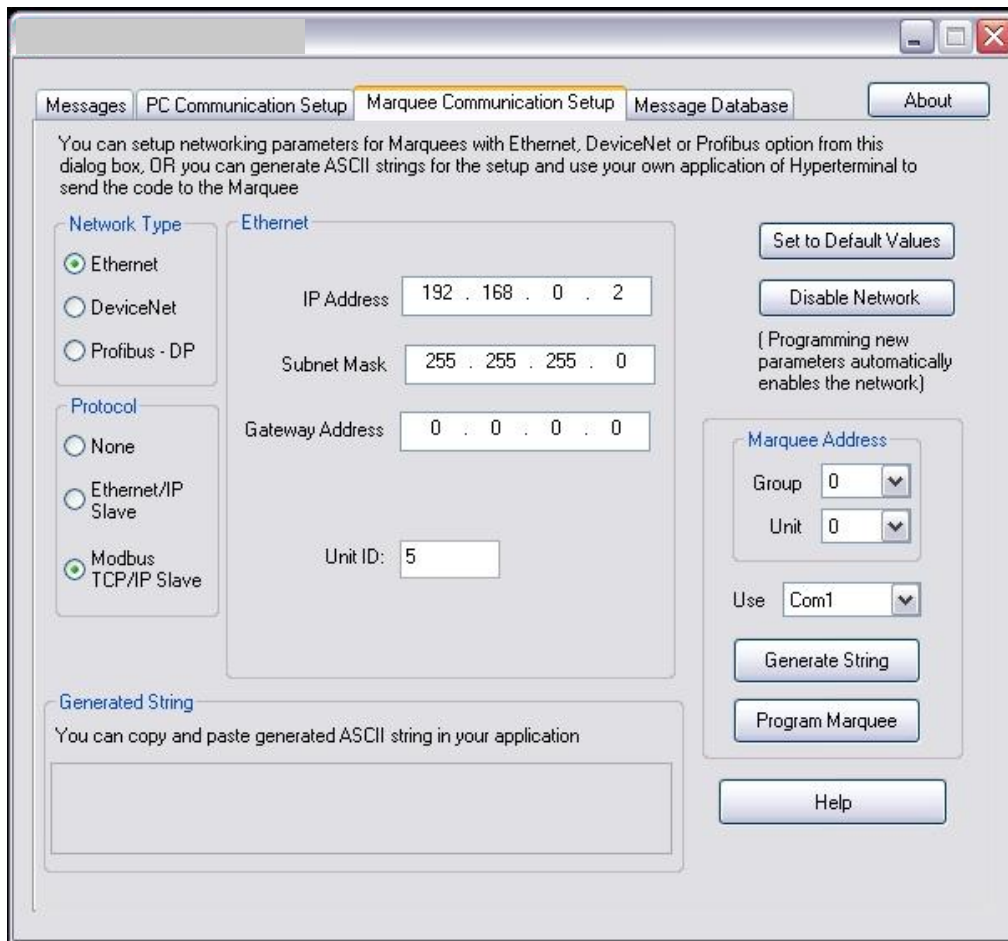


# Uticor Lite Marquee communications using Modbus TCP/IP Protocol

Open the Marquee Programming Software and select **Marquee Communications Setup**.

The following Screen will be displayed.



Enter the following settings for the Marquee Display.

Select Ethernet.

Select Modbus TCP/IP Slave.

Set the IP Address, Subnet Mask, Gateway Address of the Marquee.  
(Example: IP Address 192.168.0.2. Subnet: 255.255.255.000)

Select the Modbus Unit ID of the Marquee. (Example: Address 5)

Select Program Marquee.

The Marquee is now set up to communicate with f.i. a PLC over the Ethernet using the Modbus Protocol.

The Marquee is Slave and has to receive Data from a Modbus Master.

The Registers where the Messages are sent to starts with Register 40001.

The Message String can be max. 256 Registers long.

Address 40001 is an output Register for the Marquee and counts the number of messages processed.

Address 40002 is the first input Register to send Data to.

When you program the PLC, set up the Slave Parameters in the PLC to communicate with the Marquee. (Ethernet address and Unit ID set in the EZMarquee).

When you send f.i. UTICOR to Register 40002 through 40004, the Message UTICOR will be displayed on the Marquee.

You can use the Marquee Commands described in the Marquee Manual to clear the display etc.