

Uticor Touch Plus 15" TFT Sunlight Readable HMI

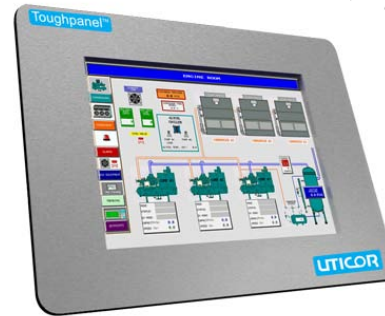
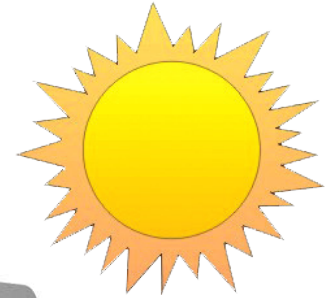
Stainless Steel Nema 4/4x Bezel Stud Mount

15" Color Uticor Touch Plus

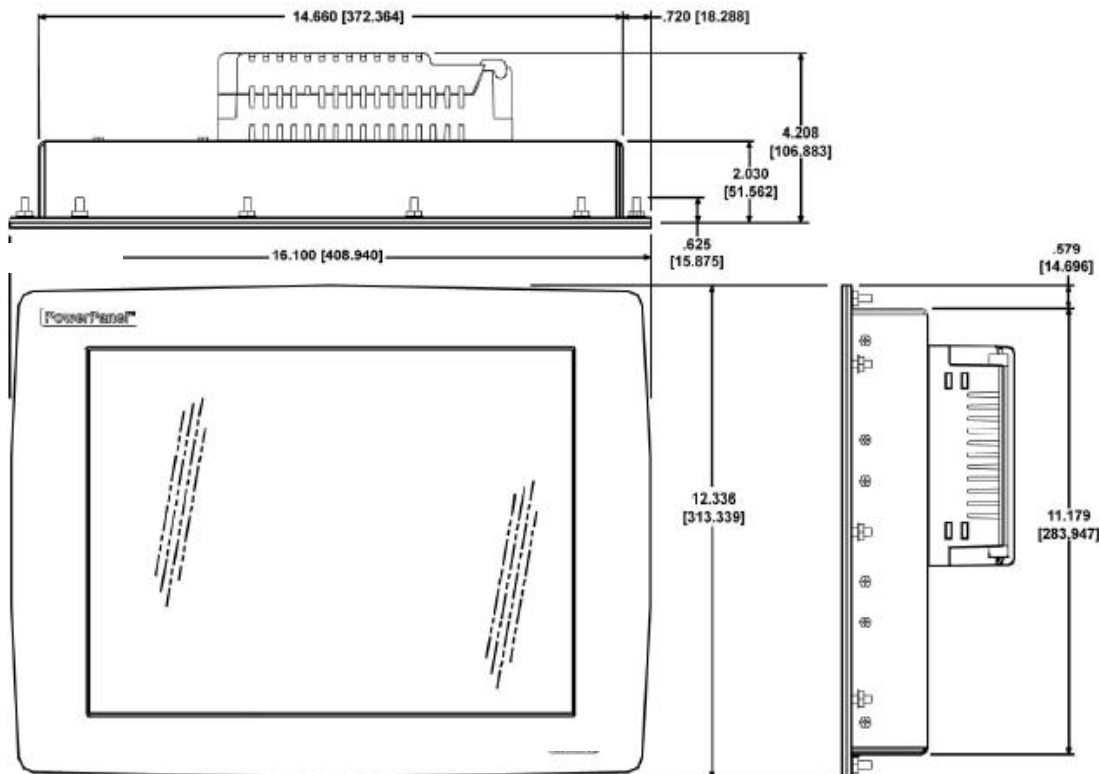
Uticor Touch Plus 15" panels HMI with both Serial and Ethernet ports and drivers. Four USB 2.0 ports, including one for programming and one MicroSD card reader built-in. LED Backlit display with 1024 x 768 resolution with **1600 nits brightness Sunlight Readable**.

Uticor Touch Plus features:


- 15" LED Backlit display with 16.2 mm Colors
- **1600 Nits brightness**
- 1024x768 resolution
- 1 GB Ethernet Port for Programming, Webserver access and PLC Communications
- 4 USB 2.0 Ports, including 1 for programming
- MicroSD Card capable
- Intel Atom E640 1 GHz processor
- 1GB DDR RAM
- **NEMA 4/4X Stainless Steel Bezel**
- 3 Year Warranty
- 6mm gasket and Stud Mounted
- 109.0mm) installed depth with Conformal coated boards
- Has all Uticor Series objects
- Has all 4,000 Library symbols
- Programmed with uWin programming software
- Netview & Control Built in



Model Number	Interface
UTTP-15TC-0-S-PPS-SUN	All serial and Ethernet drivers
UTTP-15TC-H-S-PPS-SUN	Including Allen-Bradley's DH+/ Remote I/O



Uticor Touch Plus 15" TFT Sunlight Readable HMI Specifications

Uticor Touch Plus 15" Stainless Steel Bezel HMI Sunlight Readable			
Part Number		 UTTP-15TC-0-S-PPS-SUN (Full Featured w/Ethernet and Netview & Control built-in)	
Specification	15" color slim bezel	Humidity	10-95% RH, noncondensing
Enclosure	NEMA4/4X Stainless Steel	Electrical Noise	NEMA ICS 2-230 showering arc ANSI C37.90a-1974 SWC Level C Chattering Relay Test
Display Type	15.0" TFT w/Built-in Anti-glare Sunlight Readable	Withstand Voltage	1000VDC (1 minute), between power supply input terminal and protective ground (FG)
Display View Area	305.28 x 228.96mm	Insulation Res.	Over 20 MΩ, between power supply input and terminal and protective ground (FG)
Screen Pixels	1024x768	Vibration	5 to 55Hz 2G for 2 hours in the X, Y and Z axes
Colors	256K/16.2M	Shock	10G for under 12ms in the X, Y and Z axes
Brightness/Life	1600 nits/75,000 hours	User Memory	16GB SSD, 1GB DDR2 RAM
Touch Screen	Analog Resistive Touch	# of Screens	Up to 999 limited by memory
CPU Type	Intel Atom E640 1GHz with 1GB DDR2 RAM	Real Time Clock	Built into panel (PLC clock is still accessible if available)
Service Power	24VDC (20-30VDC operating range) 2A switching supply recommended	Screen Saver	Yes, Backlight off
Power	Back-light On	36 Watts @ 24VDC	Serial and Ethernet Communications
	Back-light Off	10 Watts @ 24VDC	
Agency Approval	UL, CUL, CE		
Operating Temp.	0 to 60°C	USB	Download/program port: RS-232/RS-422/RS-485 9-pin D-sub (female)
Storage Temp.	25 to 65°C	Micro SD Card Slot	Ethernet with 10/100 BaseT
External Dimensions	408.94 x 313.34mm x 136mm deep	Weight	4 USB 2.0 Ports (Programming, Datalogging and Peripheral devices)
			Data Logging
			3.5kg